



**NYLON SWIVEL SOCKET LEVELERS — with Rubber Pad**

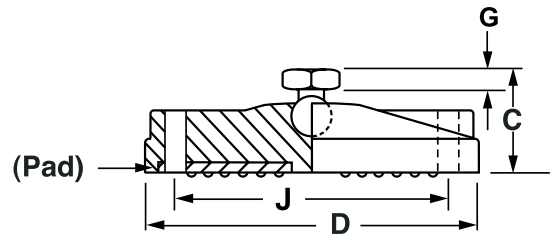
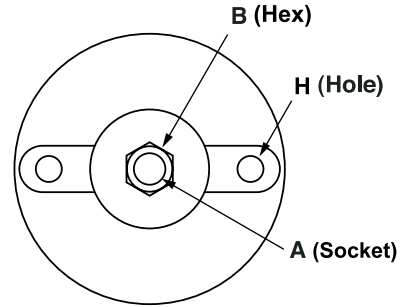
The IEC Nylon Base Steel and Stainless Steel Swivel Socket leveler with Rubber Pad is ideal for medium-duty load requirements where a stud is not required. Nylon bases 1 1/2" to 4" with 15 degree swivel supporting loads to 3,000 lbs. Steel Socket has trivalent zinc, yellow chromate finish.

**Features**

- Corrosion resistant
- 15 degree swivel
- 4 base diameters
- Glass-filled nylon
- Non skid rubber pad
- Loads to 3,000 lbs.
- RoHS compliant

**Applications**

- Electronic equipment
- Enclosures
- Conveyors
- Machinery
- Work tables
- Display racks



**1-1/2" to 4" Base Diameters**

| Steel   | Stainless    | Load | A       | B     | C      | D     | F     | G     | H   | J   |
|---|--------------|------|---------|-------|--------|-------|-------|-------|-----|-----|
| <b>Nylon Swivel Socket Levelers—with Rubber Pad</b> |              |      |         |       |        |       |       |       |     |     |
| IL93-4G-P   | IL93-4S-P    | 100  | 1/4-20  | 1/2   | 1      | 1 1/2 | 3/8   | 3/16  | -   | -   |
| IL93-5G-P   | IL93-5S-P    | 500  | 5/16-18 | 1/2   | 1      | 1 1/2 | 3/8   | 3/16  | -   | -   |
| IL93-6G-P   | IL93-6S-P    | 2500 | 3/8-16  | 1/2   | 1      | 1 1/2 | 3/8   | 3/16  | -   | -   |
| IL93-7G-P   | IL93-7S-P    | 2500 | 1/2-13  | 5/8   | 1-5/16 | 1 1/2 | 3/8   | 1/2   | -   | -   |
| IL93-8G-P   | IL93-8S-P    | 2500 | 5/8-11  | 3/4   | 1-7/16 | 1 1/2 | 1/2   | 5/8   | -   | -   |
| IL93-9G-P   | IL93-9S-P    | 2500 | 3/4-10  | 7/8   | 1-5/8  | 1 1/2 | 5/8   | 11/16 | -   | -   |
| IL93-10G-P  | IL93-10S-P   | 2500 | 1-8     | 1 1/4 | 1-7/8  | 1 1/2 | 11/16 | 3/4   | -   | -   |
| IL95-4G-P   | IL95-4S-P    | 100  | 1/4-20  | 1/2   | 1      | 2 3/8 | 3/8   | 3/16  | -   | -   |
| IL95-5G-P   | IL95-5S-P    | 500  | 5/16-18 | 1/2   | 1      | 2 3/8 | 3/8   | 3/16  | -   | -   |
| IL95-6G-P   | IL95-6S-P    | 4000 | 3/8-16  | 1/2   | 1      | 2 3/8 | 3/8   | 3/16  | -   | -   |
| IL95-7G-P   | IL95-7S-P    | 4000 | 1/2-13  | 5/8   | 1-5/16 | 2 3/8 | 3/8   | 1/2   | -   | -   |
| IL95-8G-P   | IL95-8S-P    | 4000 | 5/8-11  | 3/4   | 1-7/16 | 2 3/8 | 1/2   | 5/8   | -   | -   |
| IL95-9G-P   | IL95-9S-P    | 4000 | 3/4-10  | 7/8   | 1-5/8  | 2 3/8 | 5/8   | 11/16 | -   | -   |
| IL95-10G-P  | IL95-10S-P   | 4000 | 1-8     | 1 1/4 | 1-7/8  | 2 3/8 | 11/16 | 3/4   | -   | -   |
| IL97-4G-H-P   | IL97-4S-H-P  | 100  | 1/4-20  | 1/2   | 1      | 3 1/8 | 3/8   | 3/16  | .39 | 2.2 |
| IL97-5G-H-P   | IL97-5S-H-P  | 500  | 5/16-18 | 1/2   | 1      | 3 1/8 | 3/8   | 3/16  | .39 | 2.2 |
| IL97-6G-H-P   | IL97-6S-H-P  | 5000 | 3/8-16  | 1/2   | 1      | 3 1/8 | 3/8   | 3/16  | .39 | 2.2 |
| IL97-7G-H-P   | IL97-7S-H-P  | 5000 | 1/2-13  | 5/8   | 1-5/16 | 3 1/8 | 3/8   | 1/2   | .39 | 2.2 |
| IL97-8G-H-P   | IL97-8S-H-P  | 5000 | 5/8-11  | 3/4   | 1-7/16 | 3 1/8 | 1/2   | 5/8   | .39 | 2.2 |
| IL97-9G-H-P   | IL97-9S-H-P  | 5000 | 3/4-10  | 7/8   | 1-5/8  | 3 1/8 | 5/8   | 11/16 | .39 | 2.2 |
| IL97-10G-H-P  | IL97-10S-H-P | 5000 | 1-8     | 1 1/4 | 1-7/8  | 3 1/8 | 11/16 | 3/4   | .39 | 2.2 |
| IL99-4G-H-P   | IL99-4S-H-P  | 100  | 1/4-20  | 1/2   | 1-1/4  | 4     | 3/8   | 3/16  | .51 | 2.8 |
| IL99-5G-H-P   | IL99-5S-H-P  | 500  | 5/16-18 | 1/2   | 1-1/4  | 4     | 3/8   | 3/16  | .51 | 2.8 |
| IL99-6G-H-P   | IL99-6S-H-P  | 5000 | 3/8-16  | 1/2   | 1-1/4  | 4     | 3/8   | 3/16  | .51 | 2.8 |
| IL99-7G-H-P   | IL99-7S-H-P  | 5000 | 1/2-13  | 5/8   | 1-1/2  | 4     | 3/8   | 1/2   | .51 | 2.8 |
| IL99-8G-H-P   | IL99-8S-H-P  | 6000 | 5/8-11  | 3/4   | 1-5/8  | 4     | 1/2   | 5/8   | .51 | 2.8 |
| IL99-9G-H-P   | IL99-9S-H-P  | 7500 | 3/4-10  | 7/8   | 1-7/8  | 4     | 5/8   | 11/16 | .51 | 2.8 |
| IL99-10G-H-P  | IL99-10S-H-P | 7500 | 1-8     | 1 1/4 | 2-1/8  | 4     | 11/16 | 3/4   | .51 | 2.8 |

"-H" denotes two lag holes in base

Note: "F" column values represent thread depth

To order without rubber pad, remove "-P."

To order without lag holes, remove "-H."



**NYLON SWIVEL LEVELERS**  
**2" STUD LENGTH**

**NYLON SWIVEL STUD LEVELERS — with Rubber Pad**

The IEC Nylon Base Steel and Stainless Steel Swivel Stud leveler is ideal for medium-duty load requirements. Nylon bases from 1 1/2" to 4" with 15 degree swivel supporting loads to 3,000 lbs. Steel stud has trivalent zinc, yellow chromate finish.

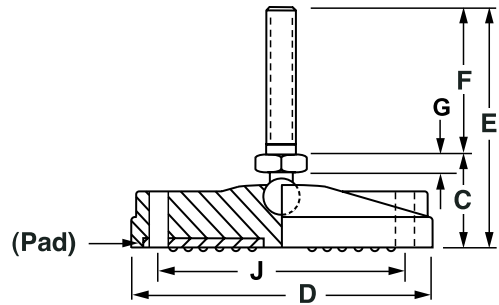
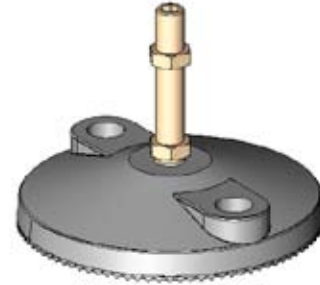
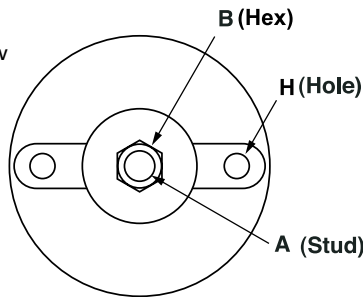
**Features**

- Corrosion resistant
- 15 degree swivel
- 4 base diameters
- Glass-filled nylon
- Non skid rubber pad
- Loads to 3,000 lbs.
- Supplied with jam nut
- RoHS compliant
- Optional Top-A-Just™ shown below (add "-BR" to P/N)



**Applications**

- Electronic equipment
- Enclosures
- Conveyors
- Machinery
- Work tables
- Display racks



**2" Stud Length**

| Steel  | Stainless    | Load | A       | B     | C     | D     | E     | F | G    | H   | J   |
|--|--------------|------|---------|-------|-------|-------|-------|---|------|-----|-----|
| <b>Nylon Swivel Stud Levelers—2" Stud and Rubber Pad</b> |              |      |         |       |       |       |       |   |      |     |     |
| IL92-4G-P  | IL92-4S-P    | 100  | 1/4-20  | 1/2   | 1     | 1 1/2 | 3     | 2 | 3/16 | -   | -   |
| IL92-5G-P  | IL92-5S-P    | 500  | 5/16-18 | 1/2   | 1     | 1 1/2 | 3     | 2 | 3/16 | -   | -   |
| IL92-6G-P  | IL92-6S-P    | 2500 | 3/8-16  | 1/2   | 1     | 1 1/2 | 3     | 2 | 3/16 | -   | -   |
| IL92-7G-P  | IL92-7S-P    | 2500 | 1/2-13  | 1/2   | 1     | 1 1/2 | 3     | 2 | 3/16 | -   | -   |
| IL92-8G-P  | IL92-8S-P    | 2500 | 5/8-11  | 5/8   | 1     | 1 1/2 | 3     | 2 | 3/16 | -   | -   |
| IL92-9G-P  | IL92-9S-P    | 2500 | 3/4-10  | 3/4   | 1     | 1 1/2 | 3     | 2 | 3/16 | -   | -   |
| IL92-10G-P   | IL92-10S-P   | 2500 | 1-8     | 1     | 1 1/4 | 1 1/2 | 3 1/4 | 2 | 7/16 | -   | -   |
| IL92-12G-P   | IL92-12S-P   | 2500 | 1 1/4-7 | 1 1/4 | 1 1/4 | 1 1/2 | 3 1/4 | 2 | 7/16 | -   | -   |
| IL94-4G-P  | IL94-4S-P    | 100  | 1/4-20  | 1/2   | 1     | 2 3/8 | 3     | 2 | 3/16 | -   | -   |
| IL94-5G-P  | IL94-5S-P    | 500  | 5/16-18 | 1/2   | 1     | 2 3/8 | 3     | 2 | 3/16 | -   | -   |
| IL94-6G-P  | IL94-6S-P    | 4000 | 3/8-16  | 1/2   | 1     | 2 3/8 | 3     | 2 | 3/16 | -   | -   |
| IL94-7G-P  | IL94-7S-P    | 4000 | 1/2-13  | 1/2   | 1     | 2 3/8 | 3     | 2 | 3/16 | -   | -   |
| IL94-8G-P  | IL94-8S-P    | 4000 | 5/8-11  | 5/8   | 1     | 2 3/8 | 3     | 2 | 3/16 | -   | -   |
| IL94-9G-P  | IL94-9S-P    | 4000 | 3/4-10  | 3/4   | 1     | 2 3/8 | 3     | 2 | 3/16 | -   | -   |
| IL94-10G-P   | IL94-10S-P   | 4000 | 1-8     | 1     | 1 1/4 | 2 3/8 | 3 1/4 | 2 | 7/16 | -   | -   |
| IL94-12G-P   | IL94-12S-P   | 4000 | 1 1/4-7 | 1 1/4 | 1 1/4 | 2 3/8 | 3 1/4 | 2 | 7/16 | -   | -   |
| IL96-4G-H-P  | IL96-4S-H-P  | 100  | 1/4-20  | 1/2   | 1     | 3 1/8 | 3     | 2 | 3/16 | .39 | 2.2 |
| IL96-5G-H-P  | IL96-5S-H-P  | 500  | 5/16-18 | 1/2   | 1     | 3 1/8 | 3     | 2 | 3/16 | .39 | 2.2 |
| IL96-6G-H-P  | IL96-6S-H-P  | 5000 | 3/8-16  | 1/2   | 1     | 3 1/8 | 3     | 2 | 3/16 | .39 | 2.2 |
| IL96-7G-H-P  | IL96-7S-H-P  | 5000 | 1/2-13  | 1/2   | 1     | 3 1/8 | 3     | 2 | 3/16 | .39 | 2.2 |
| IL96-8G-H-P  | IL96-8S-H-P  | 5000 | 5/8-11  | 5/8   | 1     | 3 1/8 | 3     | 2 | 3/16 | .39 | 2.2 |
| IL96-9G-H-P  | IL96-9S-H-P  | 5000 | 3/4-10  | 3/4   | 1     | 3 1/8 | 3     | 2 | 3/16 | .39 | 2.2 |
| IL96-10G-H-P   | IL96-10S-H-P | 5000 | 1-8     | 1     | 1 1/4 | 3 1/8 | 3 1/4 | 2 | 7/16 | .39 | 2.2 |
| IL96-12G-H-P   | IL96-12S-H-P | 5000 | 1 1/4-7 | 1 1/4 | 1 1/4 | 3 1/8 | 3 1/4 | 2 | 7/16 | .39 | 2.2 |
| IL98-4G-H-P  | IL98-4S-H-P  | 100  | 1/4-20  | 1/2   | 1 1/4 | 4     | 3 1/4 | 2 | 3/16 | .51 | 2.8 |
| IL98-5G-H-P  | IL98-5S-H-P  | 500  | 5/16-18 | 1/2   | 1 1/4 | 4     | 3 1/4 | 2 | 3/16 | .51 | 2.8 |
| IL98-6G-H-P  | IL98-6S-H-P  | 5000 | 3/8-16  | 1/2   | 1 1/4 | 4     | 3 1/4 | 2 | 3/16 | .51 | 2.8 |
| IL98-7G-H-P  | IL98-7S-H-P  | 5000 | 1/2-13  | 1/2   | 1 1/4 | 4     | 3 1/4 | 2 | 3/16 | .51 | 2.8 |
| IL98-8G-H-P  | IL98-8S-H-P  | 6000 | 5/8-11  | 5/8   | 1 1/4 | 4     | 3 1/4 | 2 | 3/16 | .51 | 2.8 |
| IL98-9G-H-P  | IL98-9S-H-P  | 7500 | 3/4-10  | 3/4   | 1 1/4 | 4     | 3 1/4 | 2 | 3/16 | .51 | 2.8 |
| IL98-10G-H-P   | IL98-10S-H-P | 7500 | 1-8     | 1     | 1 1/2 | 4     | 3 1/2 | 2 | 7/16 | .51 | 2.8 |
| IL98-12G-H-P   | IL98-12S-H-P | 7500 | 1 1/4-7 | 1 1/4 | 1 1/2 | 4     | 3 1/2 | 2 | 7/16 | .51 | 2.8 |

"H" denotes two lag holes in base

To order without rubber pad, remove "-P."

To order without lag holes, remove "-H."

To order optional top broached hex, "allen drive," add "-BR"



**NYLON SWIVEL LEVELERS**  
**3" STUD LENGTH**

**NYLON SWIVEL STUD LEVELERS — with Rubber Pad**

The IEC Nylon Base Steel and Stainless Steel Swivel Stud leveler is ideal for medium-duty load requirements. Nylon bases from 1 1/2" to 4" with 15 degree swivel supporting loads to 3,000 lbs. Steel stud has trivalent zinc, yellow chromate finish.

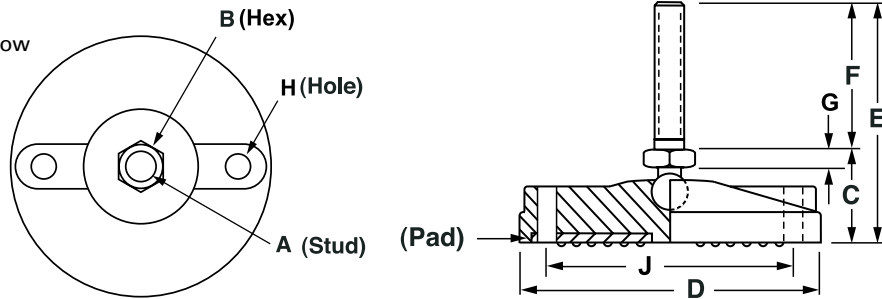
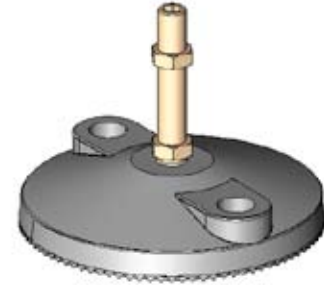
**Features**

- Corrosion resistant
- 15 degree swivel
- 4 base diameters
- Glass-filled nylon
- Non skid rubber pad
- Loads to 3,000 lbs.
- Supplied with jam nut
- RoHS compliant
- Optional Top-A-Just™ shown below (add "-BR" to P/N)



**Applications**

- Electronic equipment
- Enclosures
- Conveyors
- Machinery
- Work tables
- Display racks



**3" Stud Length**

| Steel  | Stainless      | Load | A       | B     | C     | D     | E     | F | G    | H   | J   |
|--|----------------|------|---------|-------|-------|-------|-------|---|------|-----|-----|
| <b>Nylon Swivel Stud Levelers—3" Stud and Rubber Pad</b> |                |      |         |       |       |       |       |   |      |     |     |
| IL92-4GX3-P  | IL92-4SX3-P    | 100  | 1/4-20  | 1/2   | 1     | 1 1/2 | 4     | 3 | 3/16 | -   | -   |
| IL92-5GX3-P  | IL92-5SX3-P    | 500  | 5/16-18 | 1/2   | 1     | 1 1/2 | 4     | 3 | 3/16 | -   | -   |
| IL92-6GX3-P  | IL92-6SX3-P    | 2500 | 3/8-16  | 1/2   | 1     | 1 1/2 | 4     | 3 | 3/16 | -   | -   |
| IL92-7GX3-P  | IL92-7SX3-P    | 2500 | 1/2-13  | 1/2   | 1     | 1 1/2 | 4     | 3 | 3/16 | -   | -   |
| IL92-8GX3-P  | IL92-8SX3-P    | 2500 | 5/8-11  | 5/8   | 1     | 1 1/2 | 4     | 3 | 3/16 | -   | -   |
| IL92-9GX3-P  | IL92-9SX3-P    | 2500 | 3/4-10  | 3/4   | 1     | 1 1/2 | 4     | 3 | 3/16 | -   | -   |
| IL92-10GX3-P   | IL92-10SX3-P   | 2500 | 1-8     | 1     | 1 1/4 | 1 1/2 | 4 1/4 | 3 | 7/16 | -   | -   |
| IL92-12GX3-P   | IL92-12SX3-P   | 2500 | 1 1/4-7 | 1 1/4 | 1 1/4 | 1 1/2 | 4 1/4 | 3 | 7/16 | -   | -   |
| IL94-4GX3-P  | IL94-4SX3-P    | 100  | 1/4-20  | 1/2   | 1     | 2 3/8 | 4     | 3 | 3/16 | -   | -   |
| IL94-5GX3-P  | IL94-5SX3-P    | 500  | 5/16-18 | 1/2   | 1     | 2 3/8 | 4     | 3 | 3/16 | -   | -   |
| IL94-6GX3-P  | IL94-6SX3-P    | 4000 | 3/8-16  | 1/2   | 1     | 2 3/8 | 4     | 3 | 3/16 | -   | -   |
| IL94-7GX3-P  | IL94-7SX3-P    | 4000 | 1/2-13  | 1/2   | 1     | 2 3/8 | 4     | 3 | 3/16 | -   | -   |
| IL94-8GX3-P  | IL94-8SX3-P    | 4000 | 5/8-11  | 5/8   | 1     | 2 3/8 | 4     | 3 | 3/16 | -   | -   |
| IL94-9GX3-P  | IL94-9SX3-P    | 4000 | 3/4-10  | 3/4   | 1     | 2 3/8 | 4     | 3 | 3/16 | -   | -   |
| IL94-10GX3-P   | IL94-10SX3-P   | 4000 | 1-8     | 1     | 1 1/4 | 2 3/8 | 4 1/4 | 3 | 7/16 | -   | -   |
| IL94-12GX3-P   | IL94-12SX3-P   | 4000 | 1 1/4-7 | 1 1/4 | 1 1/4 | 2 3/8 | 4 1/4 | 3 | 7/16 | -   | -   |
| IL96-4GX3-H-P  | IL96-4SX3-H-P  | 100  | 1/4-20  | 1/2   | 1     | 3 1/8 | 4     | 3 | 3/16 | .39 | 2.2 |
| IL96-5GX3-H-P  | IL96-5SX3-H-P  | 500  | 5/16-18 | 1/2   | 1     | 3 1/8 | 4     | 3 | 3/16 | .39 | 2.2 |
| IL96-6GX3-H-P  | IL96-6SX3-H-P  | 5000 | 3/8-16  | 1/2   | 1     | 3 1/8 | 4     | 3 | 3/16 | .39 | 2.2 |
| IL96-7GX3-H-P  | IL96-7SX3-H-P  | 5000 | 1/2-13  | 1/2   | 1     | 3 1/8 | 4     | 3 | 3/16 | .39 | 2.2 |
| IL96-8GX3-H-P  | IL96-8SX3-H-P  | 5000 | 5/8-11  | 5/8   | 1     | 3 1/8 | 4     | 3 | 3/16 | .39 | 2.2 |
| IL96-9GX3-H-P  | IL96-9SX3-H-P  | 5000 | 3/4-10  | 3/4   | 1     | 3 1/8 | 4     | 3 | 3/16 | .39 | 2.2 |
| IL96-10GX3-H-P   | IL96-10SX3-H-P | 5000 | 1-8     | 1     | 1 1/4 | 3 1/8 | 4 1/4 | 3 | 7/16 | .39 | 2.2 |
| IL96-12GX3-H-P   | IL96-12SX3-H-P | 5000 | 1 1/4-7 | 1 1/4 | 1 1/4 | 3 1/8 | 4 1/4 | 3 | 7/16 | .39 | 2.2 |
| IL98-4GX3-H-P  | IL98-4SX3-H-P  | 100  | 1/4-20  | 1/2   | 1 1/4 | 4     | 4 1/4 | 3 | 3/16 | .51 | 2.8 |
| IL98-5GX3-H-P  | IL98-5SX3-H-P  | 500  | 5/16-18 | 1/2   | 1 1/4 | 4     | 4 1/4 | 3 | 3/16 | .51 | 2.8 |
| IL98-6GX3-H-P  | IL98-6SX3-H-P  | 5000 | 3/8-16  | 1/2   | 1 1/4 | 4     | 4 1/4 | 3 | 3/16 | .51 | 2.8 |
| IL98-7GX3-H-P  | IL98-7SX3-H-P  | 5000 | 1/2-13  | 1/2   | 1 1/4 | 4     | 4 1/4 | 3 | 3/16 | .51 | 2.8 |
| IL98-8GX3-H-P  | IL98-8SX3-H-P  | 6000 | 5/8-11  | 5/8   | 1 1/4 | 4     | 4 1/4 | 3 | 3/16 | .51 | 2.8 |
| IL98-9GX3-H-P  | IL98-9SX3-H-P  | 7500 | 3/4-10  | 3/4   | 1 1/4 | 4     | 4 1/4 | 3 | 3/16 | .51 | 2.8 |
| IL98-10GX3-H-P   | IL98-10SX3-H-P | 7500 | 1-8     | 1     | 1 1/2 | 4     | 4 1/2 | 3 | 7/16 | .51 | 2.8 |
| IL98-12GX3-H-P   | IL98-12SX3-H-P | 7500 | 1 1/4-7 | 1 1/4 | 1 1/2 | 4     | 4 1/2 | 3 | 7/16 | .51 | 2.8 |

"-H" denotes two lag holes in base

To order without rubber pad, remove "-P."

To order without lag holes, remove "-H."

To order optional top broached hex, "allen drive," add "-BR"



**INTERNATIONAL EQUIPMENT COMPONENTS, INC.**  
 Phone: **562.597.4533** eMail: **glides@verizon.net**  
 Web: **www.levelingmounts.com**

**NYLON SWIVEL LEVELERS**  
**4" STUD LENGTH**

**NYLON SWIVEL STUD LEVELERS — with Rubber Pad**

The IEC Nylon Base Steel and Stainless Steel Swivel Stud leveler is ideal for medium-duty load requirements. Nylon bases from 1 1/2" to 4" with 15 degree swivel supporting loads to 3,000 lbs.

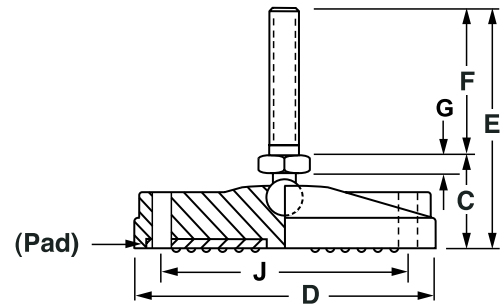
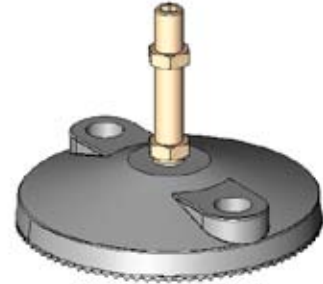
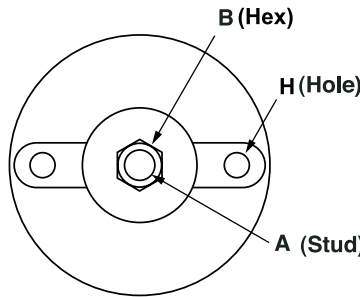
**Features**

- Corrosion resistant
- 15 degree swivel
- 4 base diameters
- Glass-filled nylon
- Non skid rubber pad
- Loads to 3,000 lbs.
- Supplied with jam nut
- RoHS compliant
- Optional Top-A-Just™ shown below (add "-BR" to P/N)



**Applications**

- Electronic equipment
- Enclosures
- Conveyors
- Machinery
- Work tables
- Display racks



**4" Stud Length**

| Steel  | Stainless      | Load | A       | B     | C     | D     | E     | F | G    | H   | J   |
|--|----------------|------|---------|-------|-------|-------|-------|---|------|-----|-----|
| <b>Nylon Swivel Stud Levelers—4" Stud and Rubber Pad</b> |                |      |         |       |       |       |       |   |      |     |     |
| IL92-4GX4-P  | IL92-4SX4-P    | 100  | 1/4-20  | 1/2   | 1     | 1 1/2 | 5     | 4 | 3/16 | -   | -   |
| IL92-5GX4-P  | IL92-5SX4-P    | 500  | 5/16-18 | 1/2   | 1     | 1 1/2 | 5     | 4 | 3/16 | -   | -   |
| IL92-6GX4-P  | IL92-6SX4-P    | 2500 | 3/8-16  | 1/2   | 1     | 1 1/2 | 5     | 4 | 3/16 | -   | -   |
| IL92-7GX4-P  | IL92-7SX4-P    | 2500 | 1/2-13  | 1/2   | 1     | 1 1/2 | 5     | 4 | 3/16 | -   | -   |
| IL92-8GX4-P  | IL92-8SX4-P    | 2500 | 5/8-11  | 5/8   | 1     | 1 1/2 | 5     | 4 | 3/16 | -   | -   |
| IL92-9GX4-P  | IL92-9SX4-P    | 2500 | 3/4-10  | 3/4   | 1     | 1 1/2 | 5     | 4 | 3/16 | -   | -   |
| IL92-10GX4-P   | IL92-10SX4-P   | 2500 | 1-8     | 1     | 1 1/4 | 1 1/2 | 5 1/4 | 4 | 7/16 | -   | -   |
| IL92-12GX4-P   | IL92-12SX4-P   | 2500 | 1 1/4-7 | 1 1/4 | 1 1/4 | 1 1/2 | 5 1/4 | 4 | 7/16 | -   | -   |
| IL94-4GX4-P  | IL94-4SX4-P    | 100  | 1/4-20  | 1/2   | 1     | 2 3/8 | 5     | 4 | 3/16 | -   | -   |
| IL94-5GX4-P  | IL94-5SX4-P    | 500  | 5/16-18 | 1/2   | 1     | 2 3/8 | 5     | 4 | 3/16 | -   | -   |
| IL94-6GX4-P  | IL94-6SX4-P    | 4000 | 3/8-16  | 1/2   | 1     | 2 3/8 | 5     | 4 | 3/16 | -   | -   |
| IL94-7GX4-P  | IL94-7SX4-P    | 4000 | 1/2-13  | 1/2   | 1     | 2 3/8 | 5     | 4 | 3/16 | -   | -   |
| IL94-8GX4-P  | IL94-8SX4-P    | 4000 | 5/8-11  | 5/8   | 1     | 2 3/8 | 5     | 4 | 3/16 | -   | -   |
| IL94-9GX4-P  | IL94-9SX4-P    | 4000 | 3/4-10  | 3/4   | 1     | 2 3/8 | 5     | 4 | 3/16 | -   | -   |
| IL94-10GX4-P   | IL94-10SX4-P   | 4000 | 1-8     | 1     | 1 1/4 | 2 3/8 | 5 1/4 | 4 | 7/16 | -   | -   |
| IL94-12GX4-P   | IL94-12SX4-P   | 4000 | 1 1/4-7 | 1 1/4 | 1 1/4 | 2 3/8 | 5 1/4 | 4 | 7/16 | -   | -   |
| IL96-4GX4-H-P  | IL96-4SX4-H-P  | 100  | 1/4-20  | 1/2   | 1     | 3 1/8 | 5     | 4 | 3/16 | .39 | 2.2 |
| IL96-5GX4-H-P  | IL96-5SX4-H-P  | 500  | 5/16-18 | 1/2   | 1     | 3 1/8 | 5     | 4 | 3/16 | .39 | 2.2 |
| IL96-6GX4-H-P  | IL96-6SX4-H-P  | 5000 | 3/8-16  | 1/2   | 1     | 3 1/8 | 5     | 4 | 3/16 | .39 | 2.2 |
| IL96-7GX4-H-P  | IL96-7SX4-H-P  | 5000 | 1/2-13  | 1/2   | 1     | 3 1/8 | 5     | 4 | 3/16 | .39 | 2.2 |
| IL96-8GX4-H-P  | IL96-8SX4-H-P  | 5000 | 5/8-11  | 5/8   | 1     | 3 1/8 | 5     | 4 | 3/16 | .39 | 2.2 |
| IL96-9GX4-H-P  | IL96-9SX4-H-P  | 5000 | 3/4-10  | 3/4   | 1     | 3 1/8 | 5     | 4 | 3/16 | .39 | 2.2 |
| IL96-10GX4-H-P   | IL96-10SX4-H-P | 5000 | 1-8     | 1     | 1 1/4 | 3 1/8 | 5 1/4 | 4 | 7/16 | .39 | 2.2 |
| IL96-12GX4-H-P   | IL96-12SX4-H-P | 5000 | 1 1/4-7 | 1 1/4 | 1 1/4 | 3 1/8 | 5 1/4 | 4 | 7/16 | .39 | 2.2 |
| IL98-4GX4-H-P  | IL98-4SX4-H-P  | 100  | 1/4-20  | 1/2   | 1 1/4 | 4     | 5 1/4 | 4 | 3/16 | .51 | 2.8 |
| IL98-5GX4-H-P  | IL98-5SX4-H-P  | 500  | 5/16-18 | 1/2   | 1 1/4 | 4     | 5 1/4 | 4 | 3/16 | .51 | 2.8 |
| IL98-6GX4-H-P  | IL98-6SX4-H-P  | 5000 | 3/8-16  | 1/2   | 1 1/4 | 4     | 5 1/4 | 4 | 3/16 | .51 | 2.8 |
| IL98-7GX4-H-P  | IL98-7SX4-H-P  | 5000 | 1/2-13  | 1/2   | 1 1/4 | 4     | 5 1/4 | 4 | 3/16 | .51 | 2.8 |
| IL98-8GX4-H-P  | IL98-8SX4-H-P  | 6000 | 5/8-11  | 5/8   | 1 1/4 | 4     | 5 1/4 | 4 | 3/16 | .51 | 2.8 |
| IL98-9GX4-H-P  | IL98-9SX4-H-P  | 7500 | 3/4-10  | 3/4   | 1 1/4 | 4     | 5 1/4 | 4 | 3/16 | .51 | 2.8 |
| IL98-10GX4-H-P   | IL98-10SX4-H-P | 7500 | 1-8     | 1     | 1 1/2 | 4     | 5 1/2 | 4 | 7/16 | .51 | 2.8 |
| IL98-12GX4-H-P   | IL98-12SX4-H-P | 7500 | 1 1/4-7 | 1 1/4 | 1 1/2 | 4     | 5 1/2 | 4 | 7/16 | .51 | 2.8 |

"-H" denotes two lag holes in base

To order without rubber pad, remove "-P."

To order without lag holes, remove "-H."

To order optional top broached hex, "allen drive," add "-BR"



**NYLON SWIVEL LEVELERS**  
**5" STUD LENGTH**

**NYLON SWIVEL STUD LEVELERS — with Rubber Pad**

The IEC Nylon Base Steel and Stainless Steel Swivel Stud leveler is ideal for medium-duty load requirements. Nylon bases from 1 1/2" to 4" with 15 degree swivel supporting loads to 3,000 lbs.

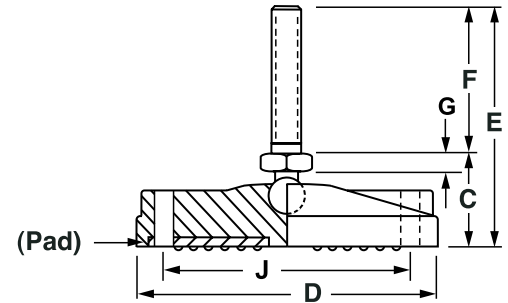
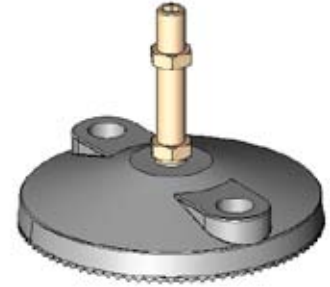
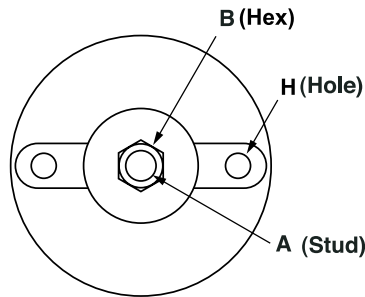
**Features**

- Corrosion resistant
- 15 degree swivel
- 4 base diameters
- Glass-filled nylon
- Non skid rubber pad
- Loads to 3,000 lbs.
- Supplied with jam nut
- RoHS compliant
- Optional Top-A-Just™ shown below (add "-BR" to P/N)



**Applications**

- Electronic equipment
- Enclosures
- Conveyors
- Machinery
- Work tables
- Display racks



**5" Stud Length**

| Steel  | Stainless      | Load | A       | B     | C     | D     | E     | F | G    | H   | J   |
|--|----------------|------|---------|-------|-------|-------|-------|---|------|-----|-----|
| <b>Nylon Swivel Stud Levelers—5" Stud and Rubber Pad</b> |                |      |         |       |       |       |       |   |      |     |     |
| IL92-4GX5-P  | IL92-4SX5-P    | 100  | 1/4-20  | 1/2   | 1     | 1 1/2 | 6     | 5 | 3/16 | -   | -   |
| IL92-5GX5-P  | IL92-5SX5-P    | 500  | 5/16-18 | 1/2   | 1     | 1 1/2 | 6     | 5 | 3/16 | -   | -   |
| IL92-6GX5-P  | IL92-6SX5-P    | 2500 | 3/8-16  | 1/2   | 1     | 1 1/2 | 6     | 5 | 3/16 | -   | -   |
| IL92-7GX5-P  | IL92-7SX5-P    | 2500 | 1/2-13  | 1/2   | 1     | 1 1/2 | 6     | 5 | 3/16 | -   | -   |
| IL92-8GX5-P  | IL92-8SX5-P    | 2500 | 5/8-11  | 5/8   | 1     | 1 1/2 | 6     | 5 | 3/16 | -   | -   |
| IL92-9GX5-P  | IL92-9SX5-P    | 2500 | 3/4-10  | 3/4   | 1     | 1 1/2 | 6     | 5 | 3/16 | -   | -   |
| IL92-10GX5-P   | IL92-10SX5-P   | 2500 | 1-8     | 1     | 1 1/4 | 1 1/2 | 6 1/4 | 5 | 7/16 | -   | -   |
| IL92-12GX5-P   | IL92-12SX5-P   | 2500 | 1 1/4-7 | 1 1/4 | 1 1/4 | 1 1/2 | 6 1/4 | 5 | 7/16 | -   | -   |
| IL94-4GX5-P  | IL94-4SX5-P    | 100  | 1/4-20  | 1/2   | 1     | 2 3/8 | 6     | 5 | 3/16 | -   | -   |
| IL94-5GX5-P  | IL94-5SX5-P    | 500  | 5/16-18 | 1/2   | 1     | 2 3/8 | 6     | 5 | 3/16 | -   | -   |
| IL94-6GX5-P  | IL94-6SX5-P    | 4000 | 3/8-16  | 1/2   | 1     | 2 3/8 | 6     | 5 | 3/16 | -   | -   |
| IL94-7GX5-P  | IL94-7SX5-P    | 4000 | 1/2-13  | 1/2   | 1     | 2 3/8 | 6     | 5 | 3/16 | -   | -   |
| IL94-8GX5-P  | IL94-8SX5-P    | 4000 | 5/8-11  | 5/8   | 1     | 2 3/8 | 6     | 5 | 3/16 | -   | -   |
| IL94-9GX5-P  | IL94-9SX5-P    | 4000 | 3/4-10  | 3/4   | 1     | 2 3/8 | 6     | 5 | 3/16 | -   | -   |
| IL94-10GX5-P   | IL94-10SX5-P   | 4000 | 1-8     | 1     | 1 1/4 | 2 3/8 | 6 1/4 | 5 | 7/16 | -   | -   |
| IL94-12GX5-P   | IL94-12SX5-P   | 4000 | 1 1/4-7 | 1 1/4 | 1 1/4 | 2 3/8 | 6 1/4 | 5 | 7/16 | -   | -   |
| IL96-4GX5-H-P  | IL96-4SX5-H-P  | 100  | 1/4-20  | 1/2   | 1     | 3 1/8 | 6     | 5 | 3/16 | .39 | 2.2 |
| IL96-5GX5-H-P  | IL96-5SX5-H-P  | 500  | 5/16-18 | 1/2   | 1     | 3 1/8 | 6     | 5 | 3/16 | .39 | 2.2 |
| IL96-6GX5-H-P  | IL96-6SX5-H-P  | 5000 | 3/8-16  | 1/2   | 1     | 3 1/8 | 6     | 5 | 3/16 | .39 | 2.2 |
| IL96-7GX5-H-P  | IL96-7SX5-H-P  | 5000 | 1/2-13  | 1/2   | 1     | 3 1/8 | 6     | 5 | 3/16 | .39 | 2.2 |
| IL96-8GX5-H-P  | IL96-8SX5-H-P  | 5000 | 5/8-11  | 5/8   | 1     | 3 1/8 | 6     | 5 | 3/16 | .39 | 2.2 |
| IL96-9GX5-H-P  | IL96-9SX5-H-P  | 5000 | 3/4-10  | 3/4   | 1     | 3 1/8 | 6     | 5 | 3/16 | .39 | 2.2 |
| IL96-10GX5-H-P   | IL96-10SX5-H-P | 5000 | 1-8     | 1     | 1 1/4 | 3 1/8 | 6 1/4 | 5 | 7/16 | .39 | 2.2 |
| IL96-12GX5-H-P   | IL96-12SX5-H-P | 5000 | 1 1/4-7 | 1 1/4 | 1 1/4 | 3 1/8 | 6 1/4 | 5 | 7/16 | .39 | 2.2 |
| IL98-4GX5-H-P  | IL98-4SX5-H-P  | 100  | 1/4-20  | 1/2   | 1 1/4 | 4     | 6 1/4 | 5 | 3/16 | .51 | 2.8 |
| IL98-5GX5-H-P  | IL98-5SX5-H-P  | 500  | 5/16-18 | 1/2   | 1 1/4 | 4     | 6 1/4 | 5 | 3/16 | .51 | 2.8 |
| IL98-6GX5-H-P  | IL98-6SX5-H-P  | 5000 | 3/8-16  | 1/2   | 1 1/4 | 4     | 6 1/4 | 5 | 3/16 | .51 | 2.8 |
| IL98-7GX5-H-P  | IL98-7SX5-H-P  | 5000 | 1/2-13  | 1/2   | 1 1/4 | 4     | 6 1/4 | 5 | 3/16 | .51 | 2.8 |
| IL98-8GX5-H-P  | IL98-8SX5-H-P  | 6000 | 5/8-11  | 5/8   | 1 1/4 | 4     | 6 1/4 | 5 | 3/16 | .51 | 2.8 |
| IL98-9GX5-H-P  | IL98-9SX5-H-P  | 7500 | 3/4-10  | 3/4   | 1 1/4 | 4     | 6 1/4 | 5 | 3/16 | .51 | 2.8 |
| IL98-10GX5-H-P   | IL98-10SX5-H-P | 7500 | 1-8     | 1     | 1 1/2 | 4     | 6 1/2 | 5 | 7/16 | .51 | 2.8 |
| IL98-12GX5-H-P   | IL98-12SX5-H-P | 7500 | 1 1/4-7 | 1 1/4 | 1 1/2 | 4     | 6 1/2 | 5 | 7/16 | .51 | 2.8 |

"-H" denotes two lag holes in base

To order without rubber pad, remove "-P."

To order without lag holes, remove "-H."

To order optional top broached hex, "allen drive," add "-BR"



**NYLON SWIVEL LEVELERS**  
**6" STUD LENGTH**

**NYLON SWIVEL STUD LEVELERS — with Rubber Pad**

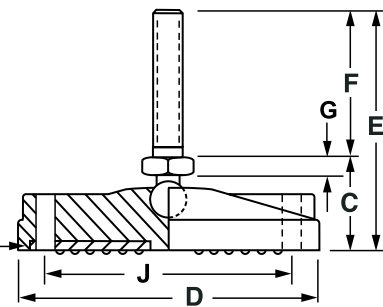
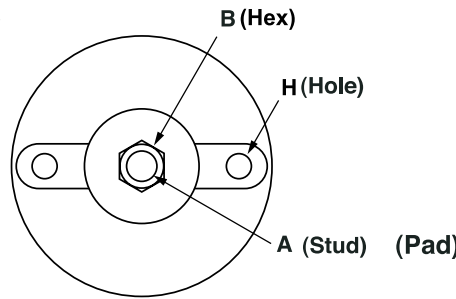
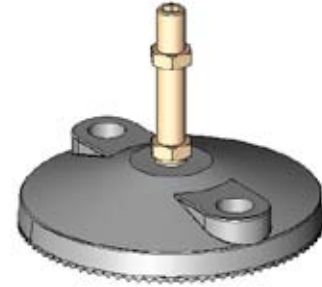
The IEC Nylon Base Steel and Stainless Steel Swivel Stud leveler is ideal for medium-duty load requirements. Nylon bases from 1 1/2" to 4" with 15 degree swivel supporting loads to 3,000 lbs.

**Features**

- Corrosion resistant
- 15 degree swivel
- 4 base diameters
- Glass-filled nylon
- Non skid rubber pad
- Loads to 3,000 lbs.
- Supplied with jam nut
- RoHS compliant
- Optional Top-A-Just™ shown below (add "-BR" to P/N)

**Applications**

- Electronic equipment
- Enclosures
- Conveyors
- Machinery
- Work tables
- Display racks



**6" Stud Length**

| Steel  | Stainless      | Load | A       | B     | C     | D     | E     | F | G    | H   | J   |
|--|----------------|------|---------|-------|-------|-------|-------|---|------|-----|-----|
| <b>Nylon Swivel Stud Levelers—6" Stud and Rubber Pad</b> |                |      |         |       |       |       |       |   |      |     |     |
| IL92-4GX6-P  | IL92-4SX6-P    | 100  | 1/4-20  | 1/2   | 1     | 1 1/2 | 7     | 6 | 3/16 | -   | -   |
| IL92-5GX6-P  | IL92-5SX6-P    | 500  | 5/16-18 | 1/2   | 1     | 1 1/2 | 7     | 6 | 3/16 | -   | -   |
| IL92-6GX6-P  | IL92-6SX6-P    | 2500 | 3/8-16  | 1/2   | 1     | 1 1/2 | 7     | 6 | 3/16 | -   | -   |
| IL92-7GX6-P  | IL92-7SX6-P    | 2500 | 1/2-13  | 1/2   | 1     | 1 1/2 | 7     | 6 | 3/16 | -   | -   |
| IL92-8GX6-P  | IL92-8SX6-P    | 2500 | 5/8-11  | 5/8   | 1     | 1 1/2 | 7     | 6 | 3/16 | -   | -   |
| IL92-9GX6-P  | IL92-9SX6-P    | 2500 | 3/4-10  | 3/4   | 1     | 1 1/2 | 7     | 6 | 3/16 | -   | -   |
| IL92-10GX6-P   | IL92-10SX6-P   | 2500 | 1-8     | 1     | 1 1/4 | 1 1/2 | 7 1/4 | 6 | 7/16 | -   | -   |
| IL92-12GX6-P   | IL92-12SX6-P   | 2500 | 1 1/4-7 | 1 1/4 | 1 1/4 | 1 1/2 | 7 1/4 | 6 | 7/16 | -   | -   |
| IL94-4GX6-P  | IL94-4SX6-P    | 100  | 1/4-20  | 1/2   | 1     | 2 3/8 | 7     | 6 | 3/16 | -   | -   |
| IL94-5GX6-P  | IL94-5SX6-P    | 500  | 5/16-18 | 1/2   | 1     | 2 3/8 | 7     | 6 | 3/16 | -   | -   |
| IL94-6GX6-P  | IL94-6SX6-P    | 4000 | 3/8-16  | 1/2   | 1     | 2 3/8 | 7     | 6 | 3/16 | -   | -   |
| IL94-7GX6-P  | IL94-7SX6-P    | 4000 | 1/2-13  | 1/2   | 1     | 2 3/8 | 7     | 6 | 3/16 | -   | -   |
| IL94-8GX6-P  | IL94-8SX6-P    | 4000 | 5/8-11  | 5/8   | 1     | 2 3/8 | 7     | 6 | 3/16 | -   | -   |
| IL94-9GX6-P  | IL94-9SX6-P    | 4000 | 3/4-10  | 3/4   | 1     | 2 3/8 | 7     | 6 | 3/16 | -   | -   |
| IL94-10GX6-P   | IL94-10SX6-P   | 4000 | 1-8     | 1     | 1 1/4 | 2 3/8 | 7 1/4 | 6 | 7/16 | -   | -   |
| IL94-12GX6-P   | IL94-12SX6-P   | 4000 | 1 1/4-7 | 1 1/4 | 1 1/4 | 2 3/8 | 7 1/4 | 6 | 7/16 | -   | -   |
| IL96-4GX6-H-P  | IL96-4SX6-H-P  | 100  | 1/4-20  | 1/2   | 1     | 3 1/8 | 7     | 6 | 3/16 | .39 | 2.2 |
| IL96-5GX6-H-P  | IL96-5SX6-H-P  | 500  | 5/16-18 | 1/2   | 1     | 3 1/8 | 7     | 6 | 3/16 | .39 | 2.2 |
| IL96-6GX6-H-P  | IL96-6SX6-H-P  | 5000 | 3/8-16  | 1/2   | 1     | 3 1/8 | 7     | 6 | 3/16 | .39 | 2.2 |
| IL96-7GX6-H-P  | IL96-7SX6-H-P  | 5000 | 1/2-13  | 1/2   | 1     | 3 1/8 | 7     | 6 | 3/16 | .39 | 2.2 |
| IL96-8GX6-H-P  | IL96-8SX6-H-P  | 5000 | 5/8-11  | 5/8   | 1     | 3 1/8 | 7     | 6 | 3/16 | .39 | 2.2 |
| IL96-9GX6-H-P  | IL96-9SX6-H-P  | 5000 | 3/4-10  | 3/4   | 1     | 3 1/8 | 7     | 6 | 3/16 | .39 | 2.2 |
| IL96-10GX6-H-P   | IL96-10SX6-H-P | 5000 | 1-8     | 1     | 1 1/4 | 3 1/8 | 7 1/4 | 6 | 7/16 | .39 | 2.2 |
| IL96-12GX6-H-P   | IL96-12SX6-H-P | 5000 | 1 1/4-7 | 1 1/4 | 1 1/4 | 3 1/8 | 7 1/4 | 6 | 7/16 | .39 | 2.2 |
| IL98-4GX6-H-P  | IL98-4SX6-H-P  | 100  | 1/4-20  | 1/2   | 1 1/4 | 4     | 7 1/4 | 6 | 3/16 | .51 | 2.8 |
| IL98-5GX6-H-P  | IL98-5SX6-H-P  | 500  | 5/16-18 | 1/2   | 1 1/4 | 4     | 7 1/4 | 6 | 3/16 | .51 | 2.8 |
| IL98-6GX6-H-P  | IL98-6SX6-H-P  | 5000 | 3/8-16  | 1/2   | 1 1/4 | 4     | 7 1/4 | 6 | 3/16 | .51 | 2.8 |
| IL98-7GX6-H-P  | IL98-7SX6-H-P  | 5000 | 1/2-13  | 1/2   | 1 1/4 | 4     | 7 1/4 | 6 | 3/16 | .51 | 2.8 |
| IL98-8GX6-H-P  | IL98-8SX6-H-P  | 6000 | 5/8-11  | 5/8   | 1 1/4 | 4     | 7 1/4 | 6 | 3/16 | .51 | 2.8 |
| IL98-9GX6-H-P  | IL98-9SX6-H-P  | 7500 | 3/4-10  | 3/4   | 1 1/4 | 4     | 7 1/4 | 6 | 3/16 | .51 | 2.8 |
| IL98-10GX6-H-P   | IL98-10SX6-H-P | 7500 | 1-8     | 1     | 1 1/2 | 4     | 7 1/2 | 6 | 7/16 | .51 | 2.8 |
| IL98-12GX6-H-P   | IL98-12SX6-H-P | 7500 | 1 1/4-7 | 1 1/4 | 1 1/2 | 4     | 7 1/2 | 6 | 7/16 | .51 | 2.8 |

"-H" denotes two lag holes in base

To order without rubber pad, remove "-P."

To order without lag holes, remove "-H."

To order optional top broached hex, "allen drive," add "-BR"



**INTERNATIONAL EQUIPMENT COMPONENTS, INC.**  
 Phone: **562.597.4533** eMail: **glides@verizon.net**  
 Web: **www.levelingmounts.com**

**NYLON SWIVEL LEVELERS**  
**8" STUD LENGTH**

**NYLON SWIVEL STUD LEVELERS — with Rubber Pad**

The IEC Nylon Base Steel and Stainless Steel Swivel Stud leveler is ideal for medium-duty load requirements. Nylon bases from 1 1/2" to 4" with 15 degree swivel supporting loads to 3,000 lbs.

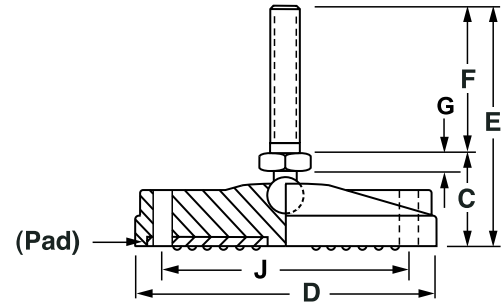
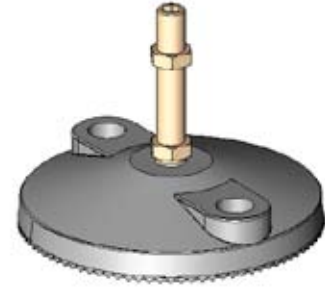
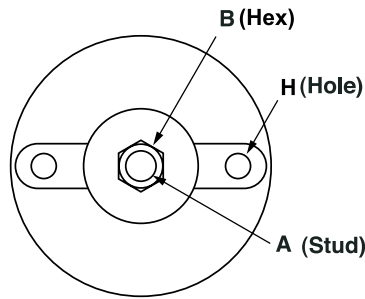
**Features**

- Corrosion resistant
- 15 degree swivel
- 4 base diameters
- Glass-filled nylon
- Non skid rubber pad
- Loads to 3,000 lbs.
- Supplied with jam nut
- RoHS compliant
- Optional Top-A-Just™ shown below (add "-BR" to P/N)



**Applications**

- Electronic equipment
- Enclosures
- Conveyors
- Machinery
- Work tables
- Display racks



**8" Stud Length**

| Steel  | Stainless      | Load | A       | B     | C     | D     | E     | F | G    | H   | J   |
|--|----------------|------|---------|-------|-------|-------|-------|---|------|-----|-----|
| <b>Nylon Swivel Stud Levelers—8" Stud and Rubber Pad</b> |                |      |         |       |       |       |       |   |      |     |     |
| IL92-4GX8-P  | IL92-4SX8-P    | 100  | 1/4-20  | 1/2   | 1     | 1 1/2 | 9     | 8 | 3/16 | -   | -   |
| IL92-5GX8-P  | IL92-5SX8-P    | 500  | 5/16-18 | 1/2   | 1     | 1 1/2 | 9     | 8 | 3/16 | -   | -   |
| IL92-6GX8-P  | IL92-6SX8-P    | 2500 | 3/8-16  | 1/2   | 1     | 1 1/2 | 9     | 8 | 3/16 | -   | -   |
| IL92-7GX8-P  | IL92-7SX8-P    | 2500 | 1/2-13  | 1/2   | 1     | 1 1/2 | 9     | 8 | 3/16 | -   | -   |
| IL92-8GX8-P  | IL92-8SX8-P    | 2500 | 5/8-11  | 5/8   | 1     | 1 1/2 | 9     | 8 | 3/16 | -   | -   |
| IL92-9GX8-P  | IL92-9SX8-P    | 2500 | 3/4-10  | 3/4   | 1     | 1 1/2 | 9     | 8 | 3/16 | -   | -   |
| IL92-10GX8-P   | IL92-10SX8-P   | 2500 | 1-8     | 1     | 1 1/4 | 1 1/2 | 9 1/4 | 8 | 7/16 | -   | -   |
| IL92-12GX8-P   | IL92-12SX8-P   | 2500 | 1 1/4-7 | 1 1/4 | 1 1/4 | 1 1/2 | 9 1/4 | 8 | 7/16 | -   | -   |
| IL94-4GX8-P  | IL94-4SX8-P    | 100  | 1/4-20  | 1/2   | 1     | 2 3/8 | 9     | 8 | 3/16 | -   | -   |
| IL94-5GX8-P  | IL94-5SX8-P    | 500  | 5/16-18 | 1/2   | 1     | 2 3/8 | 9     | 8 | 3/16 | -   | -   |
| IL94-6GX8-P  | IL94-6SX8-P    | 4000 | 3/8-16  | 1/2   | 1     | 2 3/8 | 9     | 8 | 3/16 | -   | -   |
| IL94-7GX8-P  | IL94-7SX8-P    | 4000 | 1/2-13  | 1/2   | 1     | 2 3/8 | 9     | 8 | 3/16 | -   | -   |
| IL94-8GX8-P  | IL94-8SX8-P    | 4000 | 5/8-11  | 5/8   | 1     | 2 3/8 | 9     | 8 | 3/16 | -   | -   |
| IL94-9GX8-P  | IL94-9SX8-P    | 4000 | 3/4-10  | 3/4   | 1     | 2 3/8 | 9     | 8 | 3/16 | -   | -   |
| IL94-10GX8-P   | IL94-10SX8-P   | 4000 | 1-8     | 1     | 1 1/4 | 2 3/8 | 9 1/4 | 8 | 7/16 | -   | -   |
| IL94-12GX8-P   | IL94-12SX8-P   | 4000 | 1 1/4-7 | 1 1/4 | 1 1/4 | 2 3/8 | 9 1/4 | 8 | 7/16 | -   | -   |
| IL96-4GX8-H-P  | IL96-4SX8-H-P  | 100  | 1/4-20  | 1/2   | 1     | 3 1/8 | 9     | 8 | 3/16 | .39 | 2.2 |
| IL96-5GX8-H-P  | IL96-5SX8-H-P  | 500  | 5/16-18 | 1/2   | 1     | 3 1/8 | 9     | 8 | 3/16 | .39 | 2.2 |
| IL96-6GX8-H-P  | IL96-6SX8-H-P  | 5000 | 3/8-16  | 1/2   | 1     | 3 1/8 | 9     | 8 | 3/16 | .39 | 2.2 |
| IL96-7GX8-H-P  | IL96-7SX8-H-P  | 5000 | 1/2-13  | 1/2   | 1     | 3 1/8 | 9     | 8 | 3/16 | .39 | 2.2 |
| IL96-8GX8-H-P  | IL96-8SX8-H-P  | 5000 | 5/8-11  | 5/8   | 1     | 3 1/8 | 9     | 8 | 3/16 | .39 | 2.2 |
| IL96-9GX8-H-P  | IL96-9SX8-H-P  | 5000 | 3/4-10  | 3/4   | 1     | 3 1/8 | 9     | 8 | 3/16 | .39 | 2.2 |
| IL96-10GX8-H-P   | IL96-10SX8-H-P | 5000 | 1-8     | 1     | 1 1/4 | 3 1/8 | 9 1/4 | 8 | 7/16 | .39 | 2.2 |
| IL96-12GX8-H-P   | IL96-12SX8-H-P | 5000 | 1 1/4-7 | 1 1/4 | 1 1/4 | 3 1/8 | 9 1/4 | 8 | 7/16 | .39 | 2.2 |
| IL98-4GX8-H-P  | IL98-4SX8-H-P  | 100  | 1/4-20  | 1/2   | 1 1/4 | 4     | 9 1/4 | 8 | 3/16 | .51 | 2.8 |
| IL98-5GX8-H-P  | IL98-5SX8-H-P  | 500  | 5/16-18 | 1/2   | 1 1/4 | 4     | 9 1/4 | 8 | 3/16 | .51 | 2.8 |
| IL98-6GX8-H-P  | IL98-6SX8-H-P  | 5000 | 3/8-16  | 1/2   | 1 1/4 | 4     | 9 1/4 | 8 | 3/16 | .51 | 2.8 |
| IL98-7GX8-H-P  | IL98-7SX8-H-P  | 5000 | 1/2-13  | 1/2   | 1 1/4 | 4     | 9 1/4 | 8 | 3/16 | .51 | 2.8 |
| IL98-8GX8-H-P  | IL98-8SX8-H-P  | 6000 | 5/8-11  | 5/8   | 1 1/4 | 4     | 9 1/4 | 8 | 3/16 | .51 | 2.8 |
| IL98-9GX8-H-P  | IL98-9SX8-H-P  | 7500 | 3/4-10  | 3/4   | 1 1/4 | 4     | 9 1/4 | 8 | 3/16 | .51 | 2.8 |
| IL98-10GX8-H-P   | IL98-10SX8-H-P | 7500 | 1-8     | 1     | 1 1/2 | 4     | 9 1/2 | 8 | 7/16 | .51 | 2.8 |
| IL98-12GX8-H-P   | IL98-12SX8-H-P | 7500 | 1 1/4-7 | 1 1/4 | 1 1/2 | 4     | 9 1/2 | 8 | 7/16 | .51 | 2.8 |

"-H" denotes two lag holes in base

To order without rubber pad, remove "-P."

To order without lag holes, remove "-H."

To order optional top broached hex, "allen drive," add "-BR"